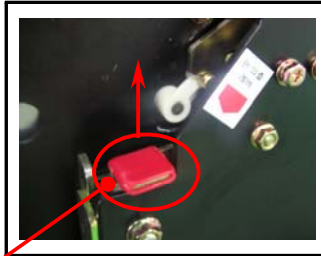


1. Draw in operation

- Do check current rating of switch and cradle.
- Make both power "OFF" using by PCN manual handle.
- Push up draw in & out lever which located at left and right side of cradle.
(2 left and right)

Note) It may cause damage of PCN, if lever were not push up.



draw in & out lever

1) Disconnected position

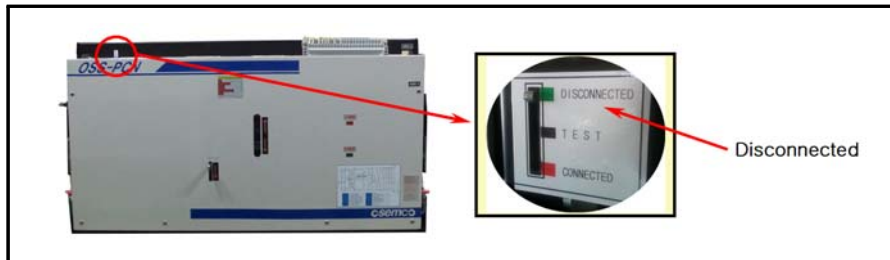
Status of main circuit terminal and operation circuit terminal is disconnected.

- Place PCN on the rail of cradle where located on left and right side, and then push PCN into inside of panel until draw in-out lever downed back.



Draw in-out rail

"Disconnected" will shows in Draw in-out indicator.



2) TEST position

Test and checking is available while main circuits terminal is disconnected, but operation circuit is connected.

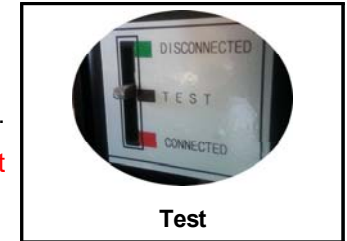
- At disconnected position, push up draw in-out lever located in both side of cradle.

Caution) It may cause damage if draw in-out lever were not push up.

- Push PCN into inside of panel until draw in-out lever downed back.

"Test" will shows in Draw in-out indicator.

Caution) Please check if draw in-out lever downed.



3) Connected position

Normal operation position while PCN and main circuit connected.

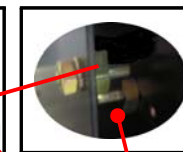
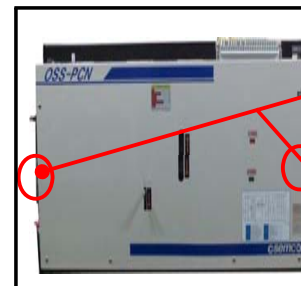
- Make both power "OFF" using by PCN manual handle.
- Push up draw in-out lever at TEST position.

Caution) It may cause damage if draw in-out lever were not push up.

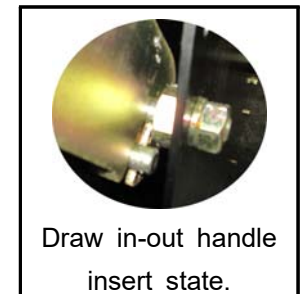
- Push PCN into inside of panel until draw in-out lever downed back.

Caution) Switch will not be draw-in compartments if PCN is ON.

Push PCN back surely as draw in-out handle reached in locking pin.

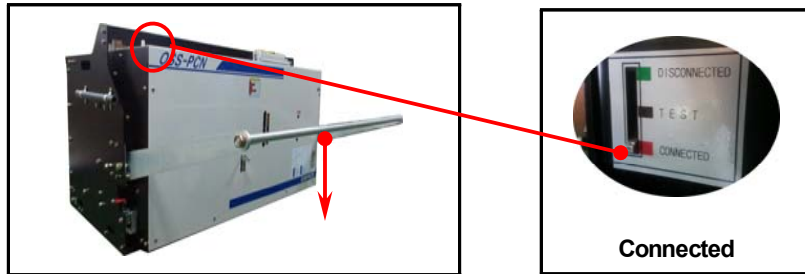


Draw in-out pin



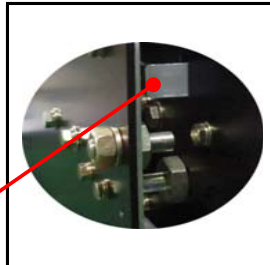
Draw in-out handle insert state.

- After push PCN back, please push down draw in-out handle, and check if draw in-out indicator is "Connected" position. Draw in-out lever may be downed back.



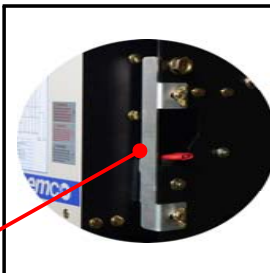
Caution) Make PCN "OFF" if draw in-out handle is not inserted while PCN "ON" status.

Safety bar for Draw in-out



- After draw in complete, place cover of draw in-out and fix butterfly bolts. (2 bolts)
Caution) PCN may draw out if cover is not fixed due to vibration.

Cover for draw in-out lever

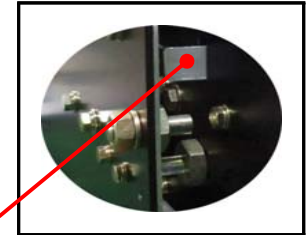


2. Draw out operation

- Make both power "OFF" using by PCN manual handle.
- Remove cover for lever by unfix butterfly bolts.
- Insert draw in-out handle while draw in-out lever push up.

Caution) Safety bar will not allow draw in-out handle inserting under PCN "ON" status.

Safety bar for Draw in-out



- PCN may draw out into "TEST" position while draw in-out handle inserted and push up. In this time draw in-out lever may downed.
- At "TEST" position, push draw in-out lever up, and pull PCN out until "Disconnected" position.
Caution) Be slowly pull switch out, it may crash.
- Remove PCN from cradle while draw in-out lever push up at "Disconnected" position.

osemco O-sung Electric Machinery Co., Ltd.

Head Office & Factory :

ADDR : 136, Hantaemal-gil Wollong-myeon, Paju-si, Gyeonggi-do KOREA

TEL : 82-31-944-3521 , FAX : 82-31-944-3525

Website : <http://www.osemco.com>